

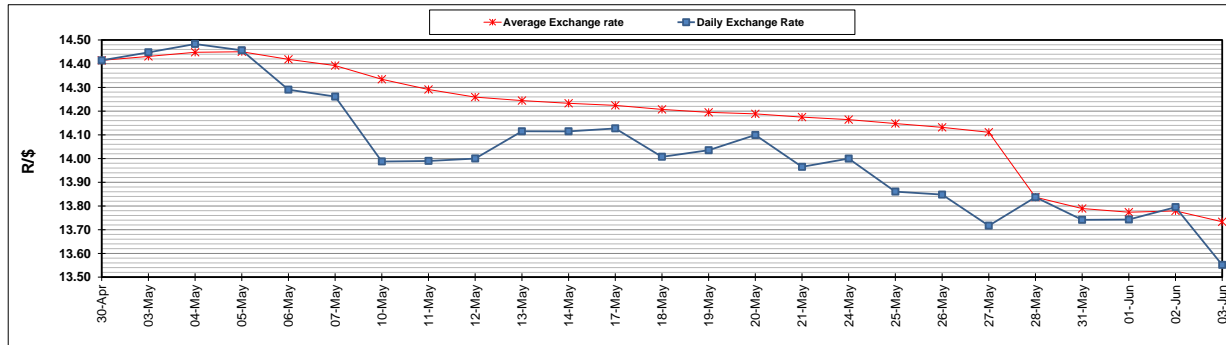
	PETROL 95 ULP	PETROL 93 ULP & LRP	DIESEL 0.05%	DIESEL 0.005%	ILL. PAR.
GAUTENG PUMP PRICE (SA c/l) AS FROM 02/06/2021	1,713.000	1,691.000	-	-	-
WHOLESALE PRICE (SA c/l) AS FROM 02/06/2021	-	-	1,466.620	1,471.020	877.488
SINGLE NATIONAL MAXIMUM RETAIL PRICE	-	-	-	-	1,102.000
BASIC FUEL PRICE - 03/06/2021 (SA c/l)	704.467	695.847	687.606	690.747	665.181
PRESS RELEASE CONTRIBUTION TO BFP 02/06/2021 - 03/06/2021 (SA c/l)	717.170	705.170	679.630	684.030	664.128
UNIT OVER/(UNDER) RECOVERY - 03/06/2021 (SA c/l)	12.703	9.323	(7.976)	(6.717)	(1.053)
AVERAGE BASIC FUEL PRICE 28/05/2021 - 03/06/2021	708.647	699.481	686.553	690.700	666.753
AVERAGE UNIT OVER/(UNDER) RECOVERY 28/05/2021 - 03/06/2021	14.523	11.689	(18.923)	(19.270)	(14.625)

ANALYSIS MOVEMENT OF AVERAGE OVER/(UNDER) RECOVERY

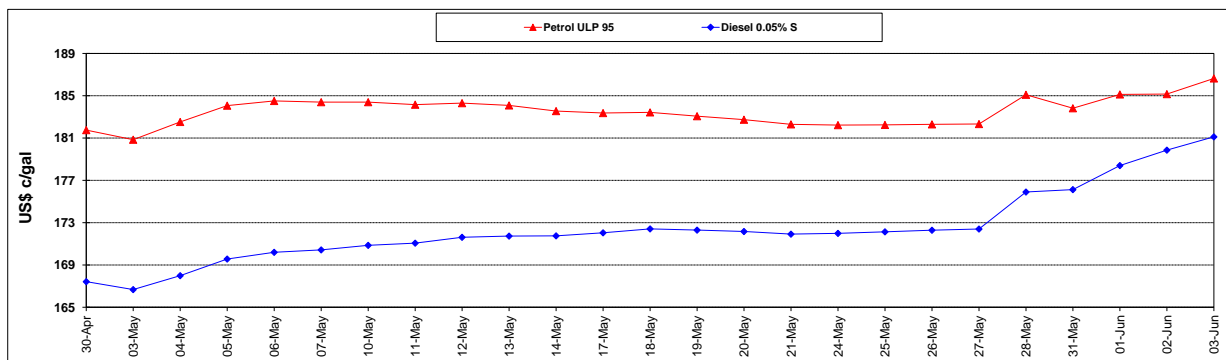
	PETROL 95	PETROL 93	DIESEL 0.05%	DIESEL 0.005%	ILL. PAR.
- MOVEMENT IN INTERNATIONAL PRODUCT PRICES	(4.956)	(7.538)	(37.795)	(38.256)	(32.952)
- MOVEMENT IN EXCHANGE RATE	19.479	19.227	18.872	18.986	18.327
AVERAGE UNIT OVER/(UNDER) RECOVERY 28/05/2021 - 03/06/2021	14.523	11.689	(18.923)	(19.270)	(14.625)

R/\$ EXCHANGE RATE - (R/\$13.5513- 03/06/2021)

EXCHANGE RATE USED IN BASIC FUEL PRICE



INTERNATIONAL PRODUCT PRICES OF BASKET USED IN BASIC FUEL PRICE



BASIC FUEL PRICE IN SA CENTS PER LITRE

